

[www.parcadfer.com](http://www.parcadfer.com)

## OUR COMMITMENT TO THE PEOPLE OF FLINTSHIRE

ADAPTED FROM WHEELABRATOR'S 17TH APRIL PLANNING COMMITTEE ADDRESS

**For the last 12 months Wheelabrator has worked hard to provide the people of Flintshire with assurances that we have the expertise, knowledge and commitment to operate a well-run facility that will only have a positive impact on your community.**

### Helping to manage your waste more efficiently

Parc Adfer is **vital** in ensuring non-recyclable waste from North Wales is managed in a more sustainable and environmentally friendly way than the current practice of landfilling. **For the first time** residual waste will be used as a resource, generating energy and boosting recycling rates. It will generate enough power to meet the needs of around 30,000 homes and its heat could be exported to a local business user. We're already pursuing this option with a range of businesses on the DEZ, the Northern Gateway and in the Connah's Quay area.

### Creating a boost for your local economy

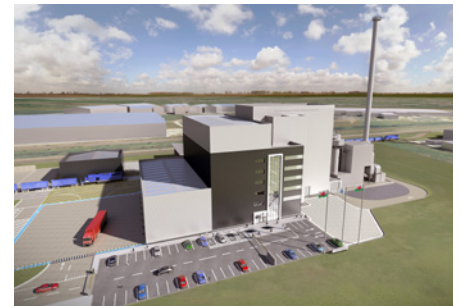
At a time when high profile job cuts are once again affecting the Deeside economy, Parc Adfer will create some 300 construction jobs and then 35 new long term jobs during our years of operation. On top of this, there will be many more indirect jobs created in areas such as haulage, engineering, maintenance and other service sectors. Our long term supply chain opportunities have been valued at more than **£40 million** over the course of the next 25 years and an annual community fund, contributed to by the five partner authorities and Wheelabrator, will amount to £230,000 for local groups and community organisations each year.

### Protecting your health

Our facility will not impact local health. This is proven technology and is similar to facilities already operating in more than 450 locations across Europe. We will use sophisticated flue gas treatment technology to ensure that emissions to air would be low enough to be considered **insignificant**. Wheelabrator has also agreed with Flintshire County Council's request for additional air quality monitoring. This means we will go above and beyond what is usually required by Natural Resources Wales.

### Providing a boost to your recycling efforts

This is a relatively small example of an energy recovery facility. It has been deliberately sized to treat only the waste that remains after North Wales has reached its world-class recycling targets. Waste that cannot be recycled. In fact, Parc Adfer will help increase your recycling rates by an estimated 7%, through the recycling of the aggregates and recovered metals. Throughout the life of Parc Adfer this could amount to **over a million tonnes** of aggregate and **60,000 tonnes** of metals being recycled.



Computer generated images of what the Parc Adfer Energy Recovery Facility could look like



The proposed Parc Adfer Energy Recovery Facility will stop waste that can't be recycled from going to landfill

## Guaranteeing to manage traffic on your roads effectively

The facility will not cause traffic congestion – in fact, a large proportion of the vehicles that will come to our site are already using local roads to transport waste to landfill. The site has **excellent** access onto the highway network. Even if every vehicle that approaches Parc Adfer uses the A494 and Aston Hill (which it won't), this would still only represent a **0.1 per cent** increase in the existing daily traffic flows. We have also included within our application the capacity to build rail connectivity into our site. Even though this isn't required by our contract, we've chosen to include it in the expectation that it may become financially viable in the years to come.

## Diverting more business waste from landfill

Parc Adfer also allows for a limited amount of waste from your local businesses to be diverted from landfill sites in North Wales and England. In reality, this element of the waste is likely to come from relatively local businesses as travel distances are usually kept to a minimum. Its make-up is likely to be similar to the types of waste collected from your homes.

## Identifying the most suitable site

The site on the Deeside Enterprise Zone is specifically allocated for employment use and is also identified as being suitable for a range of waste management uses, including energy from waste facilities. The proposed facility will suit the industrial setting in this part of the DEZ and will not lead to a detrimental impact upon either local communities or our near neighbours. Parc Adfer is situated over **1.7km** from the nearest settlement and will not lead to excessive noise levels, in fact modelling suggests noise at the identified points will not be discernible from the background noise.

## Making sure we're compliant with your local and regional planning policies

Parc Adfer is wholly compatible with Flintshire County Council Planning Policy and Welsh national policy, which clearly advocates that up to 2050, the **preferred option** for managing residual waste is through high efficiency energy from waste facilities. Parc Adfer not only **meets**, but will **significantly exceed** these requirements and will therefore be a facility which the Welsh Government, the five local authorities and the communities around Deeside can be proud of.



▲ The industrial history of the proposed site for the Parc Adfer Energy Recovery Facility

In the light of the assurance we have given here and in our detailed planning application, we respectfully ask that you support the recommendation made by your officer and approve this planning application.



▲ Pictures of the proposed site for Parc Adfer